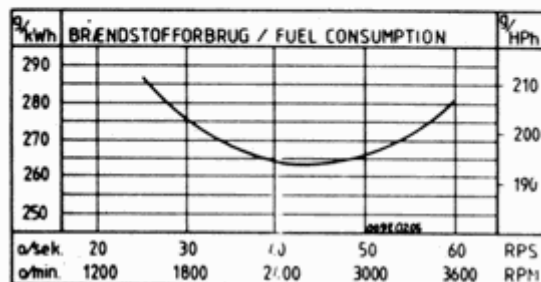
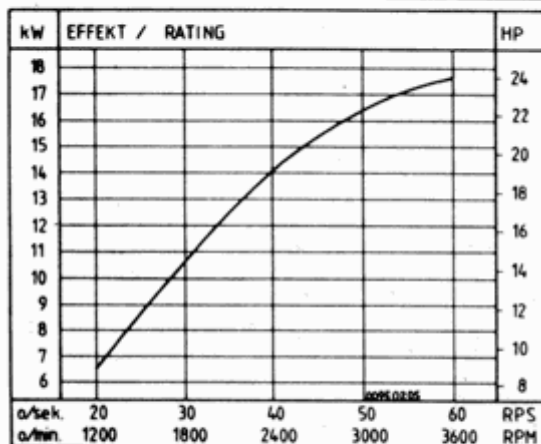
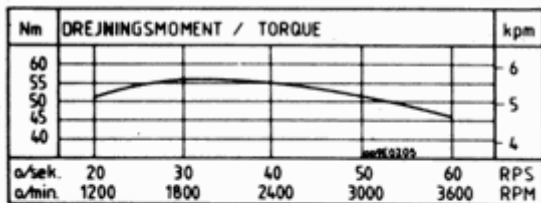


## BUKH DV 24 SME - TECHNICAL DATA

The BUKH DV 24 marine diesel with saildrive has a number of distinguishing design elements:

- Direct fuel injection means 12 - 15 per cent lower fuel consumption and longer life because of reduced thermal loads on the cylinder head.
- A well-balanced system of rotating counterweights in the engine neutralizes all vibrations.
- Minimal tolerances in all moving parts ensure the lowest possible noise level in bearings, gearwheels, pistons and connecting rods.
- Automatic fuel control guarantees that the engine only gets the amount of fuel which the immediate load requires.
- BUKH's saildrive is specially developed for BUKH engines. A sensing element between the double rubber diaphragm will sound an alarm in case of water penetration.
- A flexible coupling between engine and saildrive safeguards mechanical parts and the multiple disc clutch can stand brutal shifts from forward to reverse.



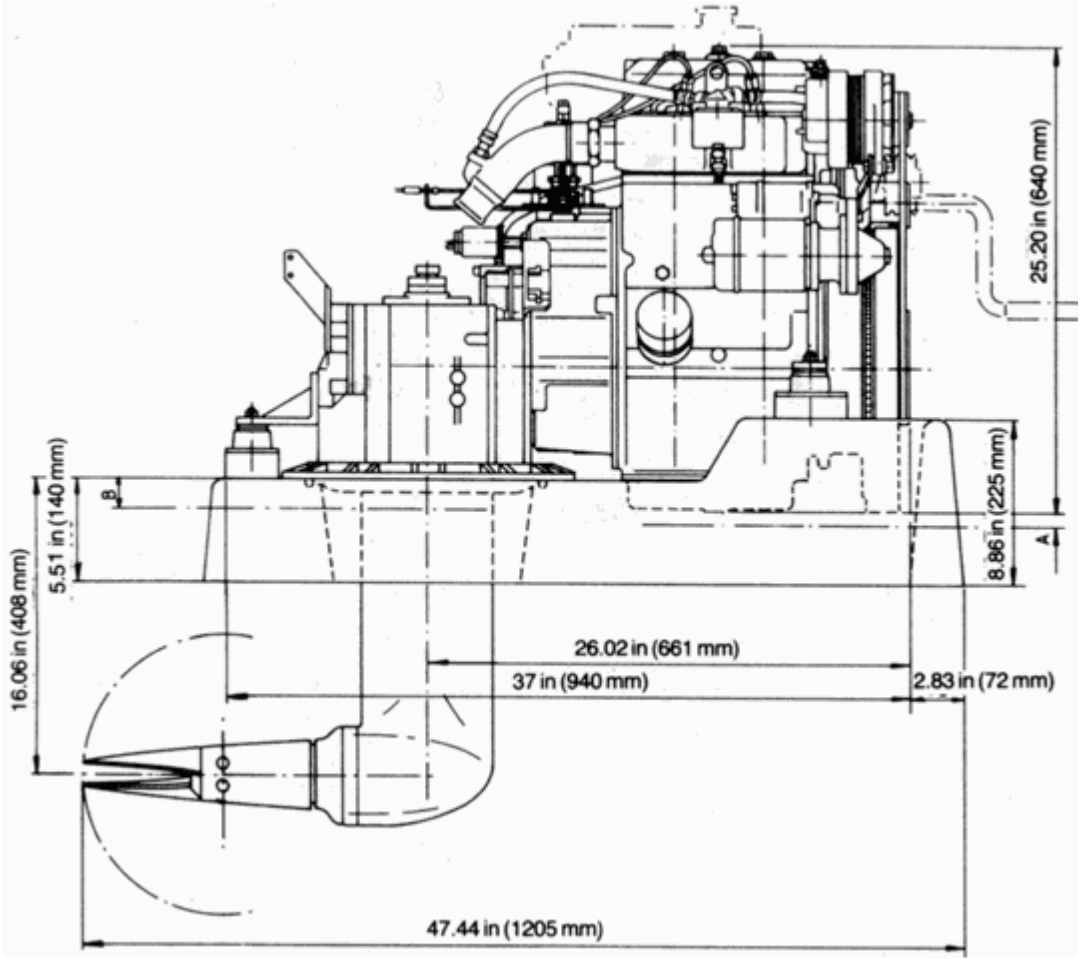
<b>Max continuous rating (DIN 6270B) at:</b>	
<b>60 rps (3600 rpm)</b>	24 HP (17.6 kW)
<b>50 rps (3000 rpm)</b>	22.4 HP (16.5 kW)
<b>40 rps (2400 rpm)</b>	19 HP (14 kW)

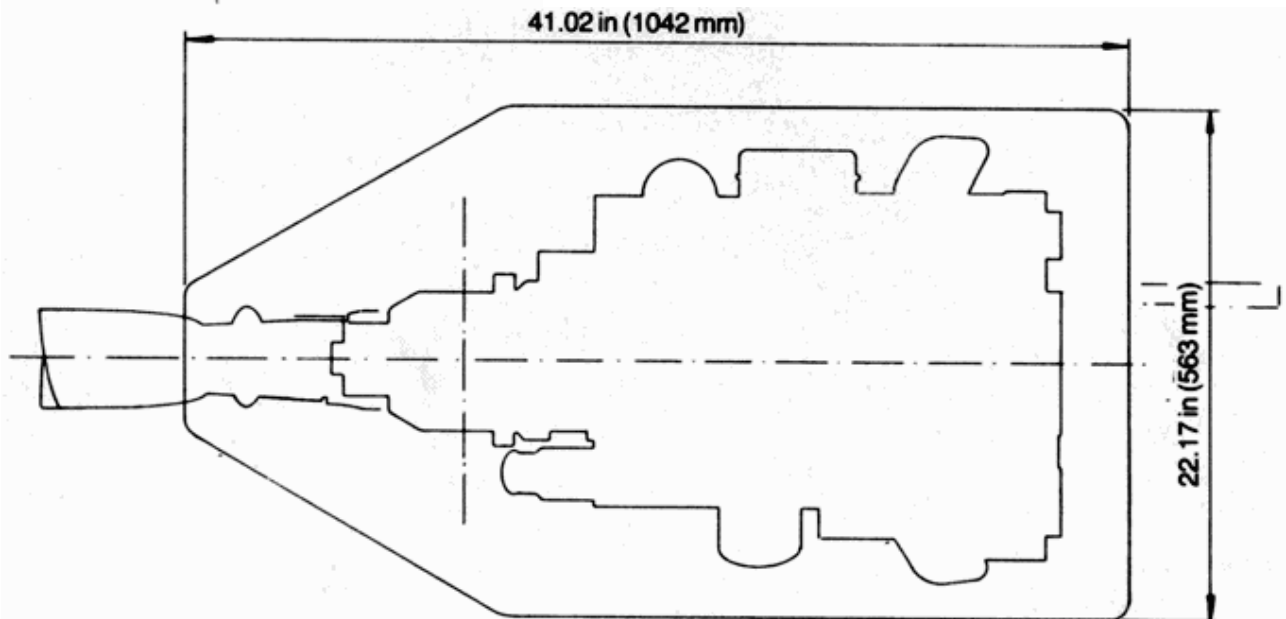
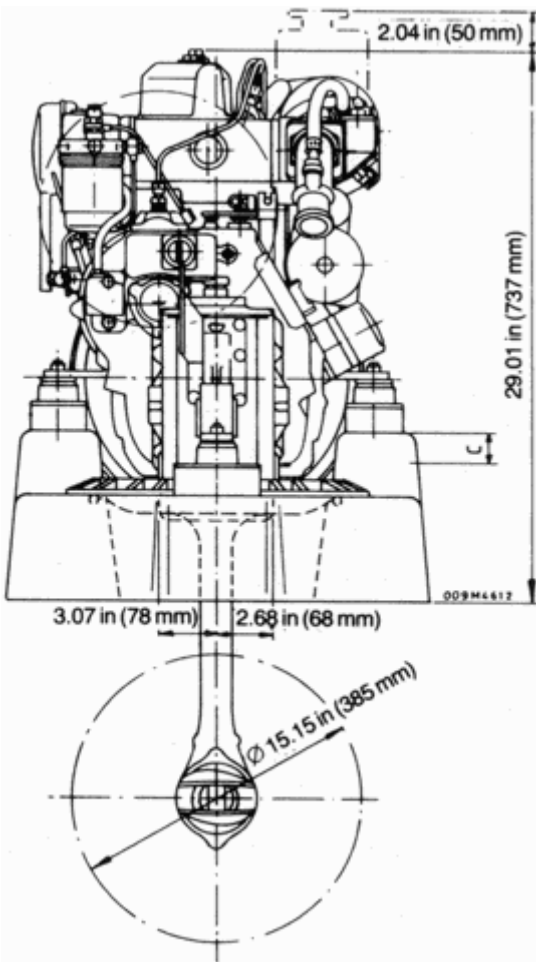
<b>Saildrive with reverse-reduction gear ratio</b>	2.25:1
<b>Engine rotation (looking forward)</b>	Anti-clockwise
<b>Propeller rotation (looking forward)</b>	Anti-clockwise
<b>Number of cylinders</b>	2
<b>Bore x stroke</b>	3.35 x 3.35 in (85 x 85 mm)
<b>Stroke volume</b>	58.82 cu in (964 cm <sup>3</sup> )
<b>Operating principle</b>	4-stroke, diesel
<b>Combustion system</b>	Direct injection
<b>Cooling system (standard)</b>	Direct seawater
<b>Max inclination - fore and aft</b>	12°
<b>Max heel - continuous</b>	25°
<b>Fuel consumption</b>	
	<b>full load</b> 1.28 galls/h (5.8 l/h)
	<b>cruising</b> 0.73 galls/h (3.3 l/h)
<b>Electric starter motor</b>	12V - 1.8 HP (1.3 kW)
<b>Charging alternator</b>	14V, 50Amp, 700W
<b>Net weight</b>	485 lbs (220 kg)

**STANDARD EQUIPMENT:**

- Saildrive with reverse-reduction gear
- Wet sump lubrication system
- Pre and main (full flow) filter
- Raised handstart
- Decompression lever
- Seawater cooling with thermostat
- Watercooled exhaust manifold
- Automatic injection timing
- Air inlet filter and silencer
- Fuel lift pump
- Remote operating panel with: Charging light, luboil pressure warning light, cooling water temperature warning light, key switch for start and stop and audible warning
- Centrifugal governor
- Electric start and charging alternator
- Zinc anode protection
- Engine plinth
- Fittings for remote control
- Standard set of tools
- Drain pump for luboil
- Flexible engine mounts
- Watercooled exhaust bend
- Operating manual

**SCHEMATICS:**





BUKH is always endeavouring to improve the engines, therefore specifications mentioned are subject to alterations without previous notice.